

11601_Oklahoma-Medley

♩ = 100



Chicks and geese and ducks bet-ter scu-rry When I take you out in the Sur-rey
Watch that fringe and see how it flut-ters When I drive them high stepp-in' strut-ters



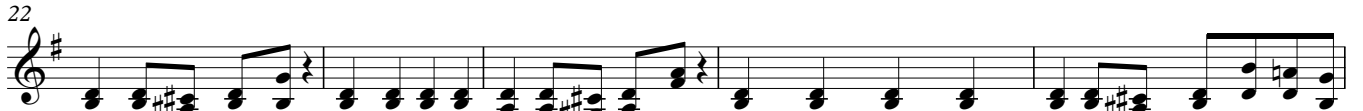
When I take you out in the Sur-rey with the fringe on top eyes will
No - sey pokes 'll see through their shut-ters And their



pop The wheels are yel-low, the up - hol stry's brown, the dash-board's ge-nu-ine lea-ther With



is-in-glass cur-tains you can roll right down in case there's a change in the wea - ther Two bright side-lights



win-kin' and blin-kin' Ain't no fi-ner rig I'm a thin-kin' You can keep your rig if you're thin-kin' At I'd



care to swap For that shi-ny lit-tle sur-rey with the fringe on the top



Don't throw bou-quets at me Don't please my folks too much



Don't laugh at my jokes too much Peo - ple will say we're in love!

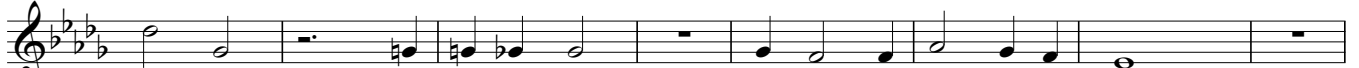


Don't sigh and gaze at me (Your sighs are so like mine)



Your eyes mus-n't glow like mine Peo - ple will say we're in love!

65



Don't start co - llec-ting things (Give me my rose and my glove)

73



Sweet-heart, they're sus - pec-ting things Peo - ple will say we're in love


81

♩ = 140



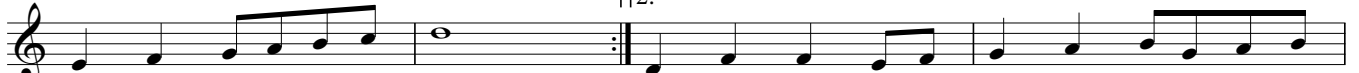
O - - kla-ho-ma where the
O kla-ho-ma, ev - 'ry

88




wind comes swee-ping down the plain. Where the wa - ving wheat can sure smell sweet when the
night my ho - ney lamp and I Sit a - lone and talk, and

92



wind comes right be-hind the rain watch a hawk ma-king la - zy cir-cles in the

96




sky We know we be-long to the land And the land we be-long to is

100



grand And when we say _____ Ay - yi - ppy - yi - ki - yea _____

104



— We're on - ly say-ing You're do-ing fine, Ok - la - ho - ma Ok - la - ho - ma you're o -

108



kay o - kay, o - kay o - kay o - kay